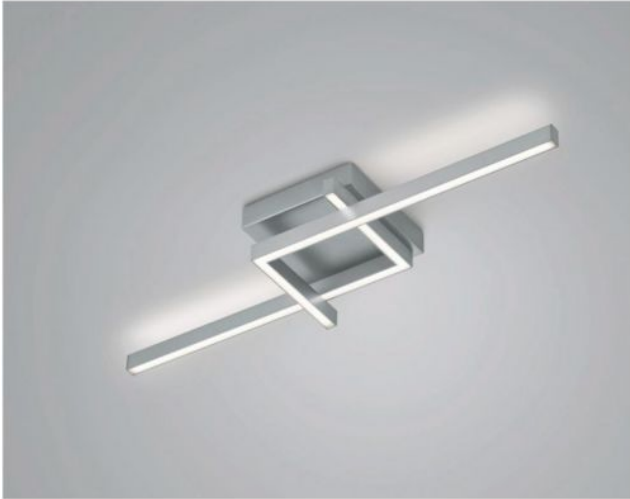


# Knapstein


## FRIDA-80

### Oberfläche

- nickel
- black



### Technical details

<b>Country of Manufacture</b>	 Germany
<b>Manufacturer</b>	Knapstein
<b>Designer</b>	Knapstein
<b>Year of design</b>	2022
<b>protection</b>	IP20
<b>Scope of delivery</b>	LED
<b>voltage suitability</b>	230 - 240 Volt
<b>material</b>	metal
<b>dimming</b>	dimmable with a trailing edge dimmer and with a leading edge dimmer
<b>Wattage</b>	36 W
<b>LED</b>	inclusive
<b>Colour Rendering Index</b>	>90
<b>Luminous flux in lm</b>	4,119
<b>Color temperature in Kelvin</b>	2,700 extra warm white
<b>bulb exchange</b>	at the manufacturer / at the factory
<b>Dimensions</b>	H 10 cm   B 24 cm   L 84 cm

### Description

The Knapstein FRIDA-80 emits light upwards and downwards at the same time, so that a uniform lighting impression is also created across the ceiling. The ceiling lamp is 84 cm long and 24 cm wide. Its height is 10 cm in total. The FRIDA-80 is available in the surfaces matt nickel and black. A powerful, dimmable LED with a colour temperature of 2,700 Kelvin extra warm white is included. The FRIDA-110 with a length of 112 cm is also available from the series.