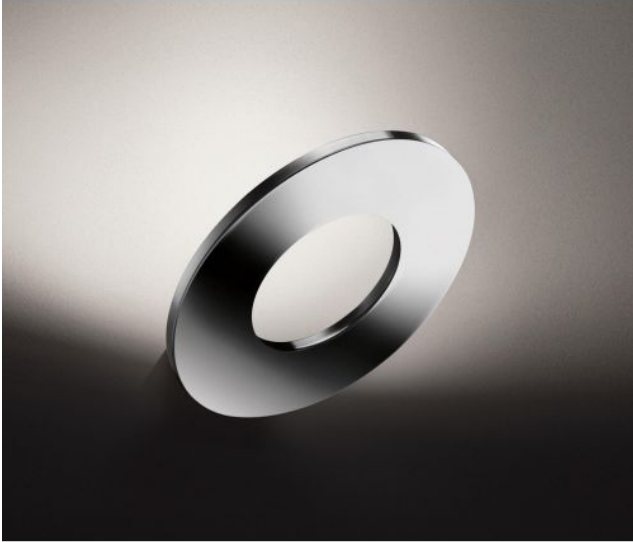


Cini & Nils

Passepartout wall lamp

Version

- oro
- cromo
- negro
- blanco



Technical details

País de la Fabricación	 Italia
fabricante	Cini & Nils
diseñador	Luta Bettonica
año	2016
protección	IP20
Volumen de suministro	LED
entrada de tensión	230 - 240 Volt
Profundidad en cm	18
Diámetro en cm	22
material	acero, aluminio
Atenuación	Regulable en el sitio con control de fase inversa
Potencia en vatios	18 W
LED	incluyendo
Indice de reproduccion cromatica	95
El flujo luminoso en lm	2.200
Temperatura de color en grados Kelvin	2.800 blanco cálido
Dimensions	H 16 cm Ø 22 cm

Descripción

The Cini & Nils Passepartout wall lamp has an LED on the back of its ring. This causes the light to be transmitted indirectly to the wall behind the lamp, from where it is partly reflected into the room. The ring has a diameter of 22 cm and is mounted slightly inclined. The Passepartout wall lamp is available in the following versions: white matt, black matt, chrome polished and gold polished. All versions except the gold version have a wall bracket made of diamond-polished aluminum. The gold version is supplied with a matt brass wall bracket. The light can be dimmed on site with a trailing edge phase dimmer. With an optionally available Casambi module, the wall lamp can be dimmed with the Casambi App via Bluetooth using a smartphone / tablet. A cover plate for the junction box is available as an accessory.