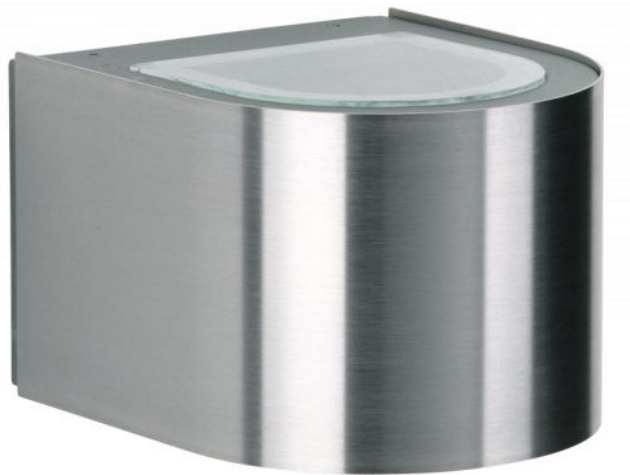



Albert

Wall Spotlight 2337



Technical details

| | |
|--|--|
| País de la Fabricación |  Alemania |
| fabricante | Albert |
| protección | IP44 |
| Volumen de suministro | LED |
| entrada de tensión | 230 - 240 Volt |
| material | acero Inoxidable, aluminio, vidrio borosilicato |
| Atenuación | Regulable en el sitio con control de fase inversa |
| LED | incluyendo |
| Indice de reproduccion cromatica | 80 - 89 |
| El flujo luminoso en lm | 660 |
| Temperatura de color en grados Kelvin | 3.000 blanco cálido |
| reemplazo de la bombilla: | en el sitio mismo |
| El rendimiento del sistema | 2 x 3 Watt |
| Dimensions | H 10 cm B 12 cm L 15 cm |

Descripción

The Albert 2337 wall spotlight is made of stainless steel and corrosion-resistant cast aluminium. This lamp is 15 cm long, 12 cm wide and 9.5 cm high. The wall lamp with 2-sided light emission, wide at the top and bottom, has a bulb cover made of borosilicate glass. The 2337 wall spotlight by the German manufacturer Albert is suitable for outdoor use and comes with a mounting plate. The lamp has a replaceable LED bulb.