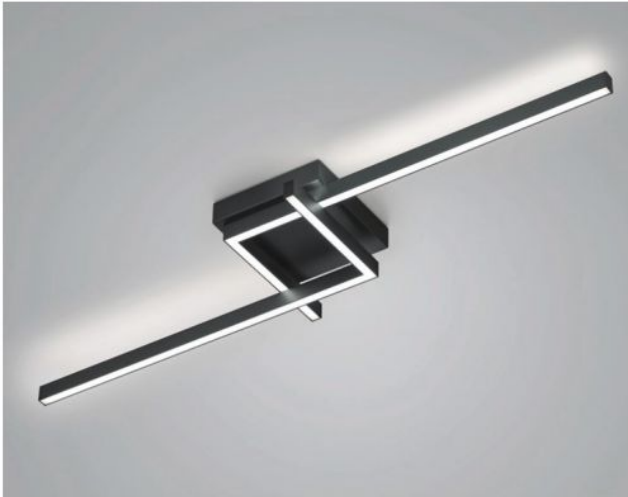


Knapstein


FRIDA-110

Oberfläche

- níquel
- negro



Technical details

País de la Fabricación	 Alemania
fabricante	Knapstein
diseñador	Knapstein
año	2022
protección	IP20
Volumen de suministro	LED
entrada de tensión	230 - 240 Volt
material	metal
Atenuación	dimnable con control de fase inversa y con reguladores de control de fase
Potencia en vatios	49 W
LED	incluyendo
Indice de reproduccion cromatica	>90
El flujo luminoso en lm	5.634
Temperatura de color en grados Kelvin	2.700 extra blanco cálido
reemplazo de la bombilla:	en el fabricante / en la fabrica
Dimensions	H 10 cm B 30 cm L 112 cm

Descripción

The Knapstein FRIDA-110 has a total length of 112 cm and a width of 30 cm. The height is 10 cm. The light from the ceiling lamp is emitted upwards and downwards at the same time, which creates a homogeneous light effect across the ceiling. Knapstein offers the FRIDA-110 in the surfaces matt nickel and black. The ceiling light is operated with an integrated, dimmable LED. The power-efficient LED has a colour temperature of 2,700 Kelvin extra warm white. The FRIDA-80 with a length of 84 cm is also offered from the family.