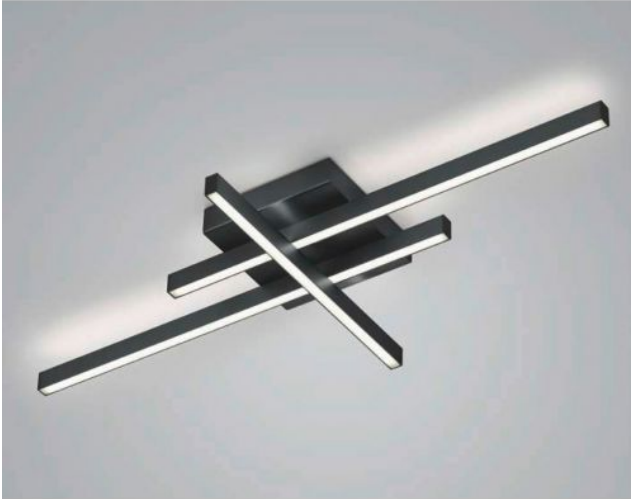


# Knapstein


## FELI

### Oberfläche

- níquel
- negro



## Technical details

<b>País de la Fabricación</b>	 Alemania
<b>fabricante</b>	Knapstein
<b>diseñador</b>	Knapstein
<b>año</b>	2022
<b>protección</b>	IP20
<b>Volumen de suministro</b>	LED
<b>entrada de tensión</b>	230 - 240 Volt
<b>material</b>	metal
<b>Atenuación</b>	dimnable con control de fase inversa y con reguladores de control de fase
<b>Potencia en vatios</b>	51 W
<b>LED</b>	incluyendo
<b>Indice de reproduccion cromatica</b>	>90
<b>El flujo luminoso en lm</b>	5.812
<b>Temperatura de color en grados Kelvin</b>	2.700 extra blanco cálido
<b>reemplazo de la bombilla:</b>	en el fabricante / en la fabrica
<b>Dimensions</b>	H 7 cm   B 42 cm   L 90 cm

## Descripción

The Knapstein FELI ceiling light consists of two horizontal rods and one vertically arranged rod. The ceiling lamp emits its light both upwards and downwards. The light emitted upwards also creates a uniform lighting effect on the ceiling. The FELI has a total length of 90 cm and a width of 42 cm. Knapstein offers the ceiling light in the surfaces matt nickel and black. The lamp is operated with a powerful, dimmable LED. The LED has a colour temperature of 2,700 Kelvin extra warm white.