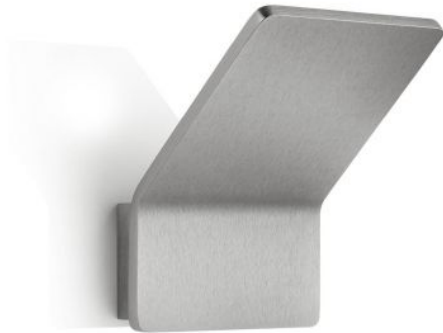


Knapstein


ANN-1

Oberfläche

- nickel
- blanc



Technical details

Pays de fabrication	 Allemagne
fabricant	Knapstein
concepteur	Knapstein
protection	IP20
Contenu de la livraison	LED
aptitude de tension	230 - 240 Volt
Profondeur en cm	10
matériel	métal
atténuation	gradable avec variateur à coupure de phase et à commande de phase
Puissance en Watt	10 W
LED	y compris
Indice de rendu des couleurs	>90
Flux lumineux en lm	850
La température de couleur en Kelvin	2.700 extra blanc chaud
remplacement des ampoules :	chez le fabricant / a l'usine
Dimensions	H 13 cm B 10 cm

Description

The Knapstein ANN-1 wall lamp emits indirect light to the wall behind it. The lamp is 10 cm wide and 12.5 cm high. It is 10 cm deep in total. The ANN-1 is available in matt nickel and white. The integrated LED has a colour temperature of 2,700 Kelvin extra warm white and can be dimmed on site with a leading or trailing edge phase dimmer. In addition to this wall light, the ANN-2 with a width of 15 cm and a height of 18.5 cm is also offered from the series.