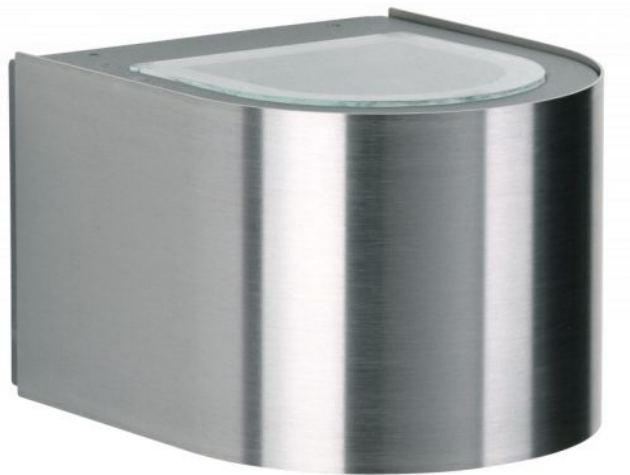



# Albert

## Wall Spotlight 2337



### Technical details

<b>Pays de fabrication</b>	 Allemagne
<b>fabricant</b>	Albert
<b>protection</b>	IP44
<b>Contenu de la livraison</b>	LED
<b>aptitude de tension</b>	230 - 240 Volt
<b>matériel</b>	acier Inoxydable, aluminium, verre borosilicate
<b>atténuation</b>	dimmerable sur place avec commande gradateur de phase inverse
<b>LED</b>	y compris
<b>Indice de rendu des couleurs</b>	80 - 89
<b>Flux lumineux en lm</b>	660
<b>La température de couleur en Kelvin</b>	3.000 blanc chaud
<b>remplacement des ampoules :</b>	sur le site meme
<b>Les performances du système</b>	2 x 3 Watt
<b>Dimensions</b>	H 10 cm   B 12 cm   L 15 cm

### Description

The Albert 2337 wall spotlight is made of stainless steel and corrosion-resistant cast aluminium. This lamp is 15 cm long, 12 cm wide and 9.5 cm high. The wall lamp with 2-sided light emission, wide at the top and bottom, has a bulb cover made of borosilicate glass. The 2337 wall spotlight by the German manufacturer Albert is suitable for outdoor use and comes with a mounting plate. The lamp has a replaceable LED bulb.