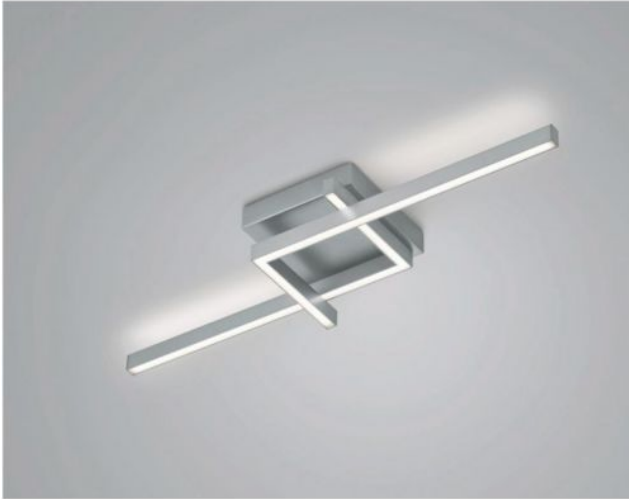


# Knapstein


## FRIDA-80

### Oberfläche

- nickel
- noir



### Technical details

<b>Pays de fabrication</b>	 Allemagne
<b>fabricant</b>	Knapstein
<b>concepteur</b>	Knapstein
<b>année</b>	2022
<b>protection</b>	IP20
<b>Contenu de la livraison</b>	LED
<b>aptitude de tension</b>	230 - 240 Volt
<b>matériel</b>	métal
<b>atténuation</b>	gradable avec variateur à coupure de phase et à commande de phase
<b>Puissance en Watt</b>	36 W
<b>LED</b>	y compris
<b>Indice de rendu des couleurs</b>	>90
<b>Flux lumineux en lm</b>	4.119
<b>La température de couleur en Kelvin</b>	2.700 extra blanc chaud
<b>remplacement des ampoules :</b>	chez le fabricant / a l'usine
<b>Dimensions</b>	H 10 cm   B 24 cm   L 84 cm

### Description

The Knapstein FRIDA-80 emits light upwards and downwards at the same time, so that a uniform lighting impression is also created across the ceiling. The ceiling lamp is 84 cm long and 24 cm wide. Its height is 10 cm in total. The FRIDA-80 is available in the surfaces matt nickel and black. A powerful, dimmable LED with a colour temperature of 2,700 Kelvin extra warm white is included. The FRIDA-110 with a length of 112 cm is also available from the series.