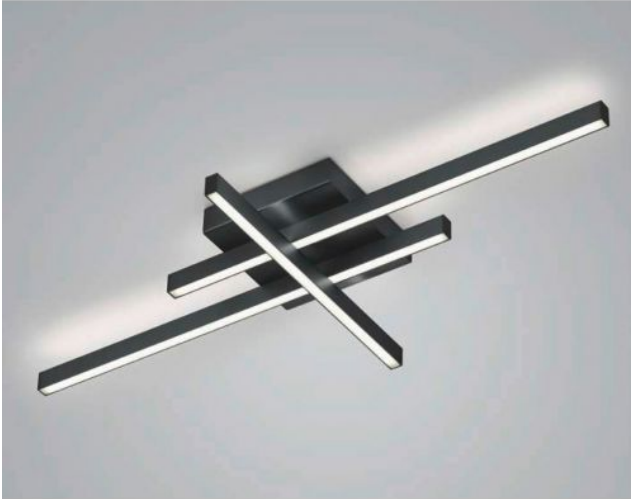


Knapstein


FELI

Oberfläche

- nickel
- noir



Technical details

Pays de fabrication	 Allemagne
fabricant	Knapstein
concepteur	Knapstein
année	2022
protection	IP20
Contenu de la livraison	LED
aptitude de tension	230 - 240 Volt
matériel	métal
atténuation	gradable avec variateur à coupure de phase et à commande de phase
Puissance en Watt	51 W
LED	y compris
Indice de rendu des couleurs	>90
Flux lumineux en lm	5.812
La température de couleur en Kelvin	2.700 extra blanc chaud
remplacement des ampoules :	chez le fabricant / a l'usine
Dimensions	H 7 cm B 42 cm L 90 cm

Description

The Knapstein FELI ceiling light consists of two horizontal rods and one vertically arranged rod. The ceiling lamp emits its light both upwards and downwards. The light emitted upwards also creates a uniform lighting effect on the ceiling. The FELI has a total length of 90 cm and a width of 42 cm. Knapstein offers the ceiling light in the surfaces matt nickel and black. The lamp is operated with a powerful, dimmable LED. The LED has a colour temperature of 2,700 Kelvin extra warm white.