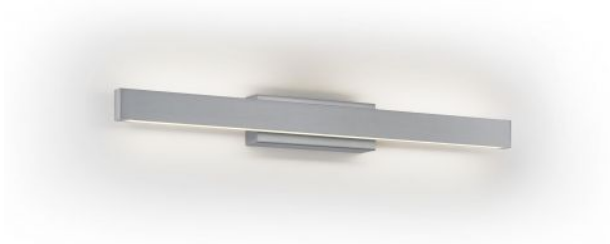



Knapstein

LENE-W



Technical details

Kraj produkcji	 Niemcy
producent	Knapstein
projektant	Knapstein
ochrona	IP20
zakres dostawy	LED
napięcie przydatność	230 - 240 Volt
Głębokość w cm	6
tworzywo	mosiądz
ściemnianie	kontrola gestow
Moc w watach	13 W
LED	łącznie
Wskaźnik oddawania barw	>90
Strumień świetlny w lm	1.600
Temperatura barwowa w stopniach Kelvina	2.700 extra biała ciepła
wymiana żarówek:	u producenta / w fabryce
Dimensions	H 6 cm B 53 cm

Opis

The Knapstein LENE-W wall lamp emits its light simultaneously upwards and downwards. This creates lighting effects on the wall around the lamp. The wall lamp is 52.5 cm wide and 5.7 cm high. Its wall bracket is 16.5 cm wide. The depth of the lamp is 6 cm. The light can be switched and continuously dimmed by gesture control. The gesture control sensor is located in the middle of the upper LED. The light can be switched on or off with a wiping hand movement. To dim the light, the hand is held in the sensor area until the desired light intensity is reached. The lamp can also be installed with the sensor on the underside.

An LED with a colour temperature of 2,700 Kelvin extra warm white is integrated as the light source. The LENE-W from Knapstein is made of matt nickel-plated brass.